

TERRA 4D and MBE 1500

Mobile Monitoring Solution



extend your view **4+**

TERRA

TERRA 4D & VIMTEC's MBE 1500 offer a highly flexible standalone mobile monitoring solution.

TERRA 4D

The TERRA 4D integrated geospatial command and control centre solution provides tools that significantly accelerate response and improve efficiency in every phase of the situational management lifecycle during critical operations such as address search in live video streams, multi-camera tracking, time-synchronized video and meta data recording and playback, latency-free control of PTZ cameras and automated workflows.

VIMTEC MBE 1500

The VIMTEC MBE 1500 serves as a system platform for the required monitoring technology. Thanks to its construction as a trailer, the VIMTEC MBE 1500 can be quickly transported

to the desired location. The system is very easy to operate and can be set up within minutes. Standalone operation is enabled by an integrated power generation and battery system meaning the VIMTEC MBE 1500 can be set up without external power supply. With a fuel tank holding 200 litres of diesel fuel the VIMTEC MBE 1500 can easily run for 120 days in hybrid mode.

Integrated Solution

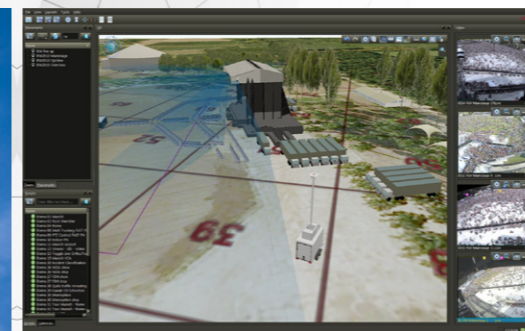
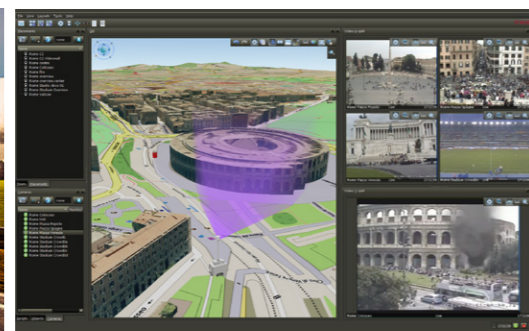
Thanks to the tamper-proof construction and the flexible design of monitoring technology the VIMTEC MBE 1500 combined with the FAST Protect TERRA 4D software management platform is an ideal solution for monitoring of police operations, events or the safeguarding of open areas.

The perfect combination to provide advanced solutions for mobile video surveillance.

The combination of VIMTEC's MBE 1500 trailer and FAST Protect's TERRA 4D management and integration software platform offer an advanced solution for mobile video surveillance tasks. The MBE 1500 acts as a highly flexible sensor base that can be equipped with different IP subsystems, e.g. fixed cameras, PTZ cameras, thermal / infrared cameras, mast lighting, speaker, IMSI catcher, direction finder, radar etc. Security operators receive critical information in real-time from the trailer and are able to monitor the status of the trailer itself and all connected subsystems. Thanks to the 3D GIS model the intuitive and field-approved user interface provides superior situational awareness in all circumstances including augmented reality information in live video streams.

Better safe than sorry. Always and everywhere. Mobile Monitoring Solution with TERRA 4D and MBE 1500.

- Mobile video surveillance
- Real time surveillance, e.g. during police operations
- Video surveillance of mass events, e.g. festivals and sports events
- Traffic monitoring
- Construction sites and large open spaces
- Airports



Trailer

Visualization of position	Visualization of trailer position on map.
Status	Monitor current trailer status visualized on map and recording of trailer status for later review.
Video transmission	Live video transmission from the trailer and video recording in the command and control center.
Geo-referenced video	Determine object location (latitude, longitude, height), speed, direction and size directly from video image.
Field of view	Visualization of field of view of the trailer cameras including PTZ cameras.
PTZ control	PTZ control manual (click on target) or via target coordinate (e.g. tracking of video analytics objects).
Get address by clicking in the video	Get address by clicking in the video.
Meta data recording	PTZ head data are recorded.

Resource Management

Intervention	Guided intervention with target coordinates on mobile device.
Messaging	Exchange text message and imagery bidirectional between command and control center and mobile unit.
Alarm	Trigger alarm from mobile device after verification.
Mobile application	Application for mobile devices running iOS or Android.
Recording	Time-synchronized recordings for later playback/evidence.
Manage response	Maximum alarm response and notifications in real-time.
Incident reporting	Interactive incident reports including camera images, map views and other solution specific data fields.

3D Visualization

Multi Layer GIS with real-time rendering engine	Digital Terrain Model (DTM), Ortho imagery (aerial or satellite images), Street map, 3D buildings.
Object track visualization	Trace object's movement including historical track in 3D GIS model.
Video wall	Live or playback video is "projected" on virtual video walls in 3D GIS model. Camera orientation and view area is shown.
Avatar	Represents a detected object and its class in the 3D space.

Command and Control

Video wall	Support of video walls and multiple screens per desk.
Time machine	Navigate through space and time and see all recorded data (video, tracked objects, PTZ positions,...) time-synchronized.
Flexible GUI layouts	GUI layouts changing automatically or driven by operator. User and situation specific layouts are possible.
Chat messenger	Operators exchange information quick and simple.

Event and Alarm Management

Workflow automation	Intuitive workflows remove operator randomness and reduce stress.
Escalation and delegation	Escalate alarms to super visor user groups or delegate alarms to other operators for work balancing.
Procedure enforcement	Workflows enforce company's or legal compliance guidelines.
Operator alarm	Operator can select alarm templates and fire alarms at specific locations on the map or directly in the video.

FAST Systems AG

Höschgasse 25
8008 Zürich
Switzerland

Tel +41 44 262 84 10
Fax +41 44 262 84 11

FAST Protect GmbH

Siemensstr. 16/1
88048 Friedrichshafen
Germany

Tel +49 7541 950 177 0
Fax +49 7541 950 177 1

solutions@fastprotect.net
www.fastprotect.net

VIMTEC GmbH

Bahnhofstraße 8
02779 Hainewalde
Germany

Tel +49 35841 336 0
Fax +49 35841 336 22

info@vimtec.eu
www.vimtec.eu